

## Apps & Devices: Choosing The Right System





Convenient and Flexible



## MicroGuard



A compact, lightweight lone worker device that is fully certified to BS 8484:2016.

Combining the latest GPS, GPRS and Man Down technologies, MicroGuard provides lone workers with discreet and convenient protection. The flexible design allows the device to be discreetly worn in a variety of ways, making it a popular choice with public-facing lone workers.



Discreet Solution



## Identicom 877



Discreet and simple to use, the Identicom 877 is a dedicated lone worker device that is ideal for public facing roles.

Configurable with one or two-way audio communication, the BS 8484:2016 certified device provides three multifunction buttons that can be used to call or text a specific contact. The Identicom also provides GPS and Man Down assistance.

03

Remote Working



## Spot Gen3

The Spot Gen3 satellite device fits within the palm of your hand and provides lone worker protection in remote areas where no mobile signal is available.

The latest in a multi-award winning product range, the Spot offers SOS alerting and follow-me tracking — all with the simple push of a button.

04

Lower Risk Environments



## Peoplesafe App

Our app is packed with high-tech features and can quickly turn a smartphone into an effective personal safety device.

Available across all major operating systems, the app can process Red Alert calls, check in and out of meetings, utilises GPS, and provides Man Down assistance\*. Available on:



\*Man Down assistance only available on Android.

# Key

Suitable for:

- Fixed site
- Mobile Workers
- Public Facing

# Key

Suitable for:

-  Fixed site
-  Mobile Workers
-  Public Facing



## Twig Ex (ATEX)

The Twig Ex is an intrinsically safe device for lone workers in explosive hazardous areas.

With two-way audio communication, GPS, Man Down capabilities and waterproof casing, the Twig combines high performance with durability and features pre-defined buttons for voice calls.



## Standard Mobile



A great entry level solution for low risk workers, those on a budget or infrequent lone workers.

Our standard mobile phone (2G) solution provides a simple and affordable way for employees to carry out safe and well checks or raise Red Alerts. This user friendly solution utilises existing mobile phones or landlines.

# Risk Factors to Consider

Various risk factors influence how suitable an app or device will be in assisting the safety of your team. Here's how our products compare.

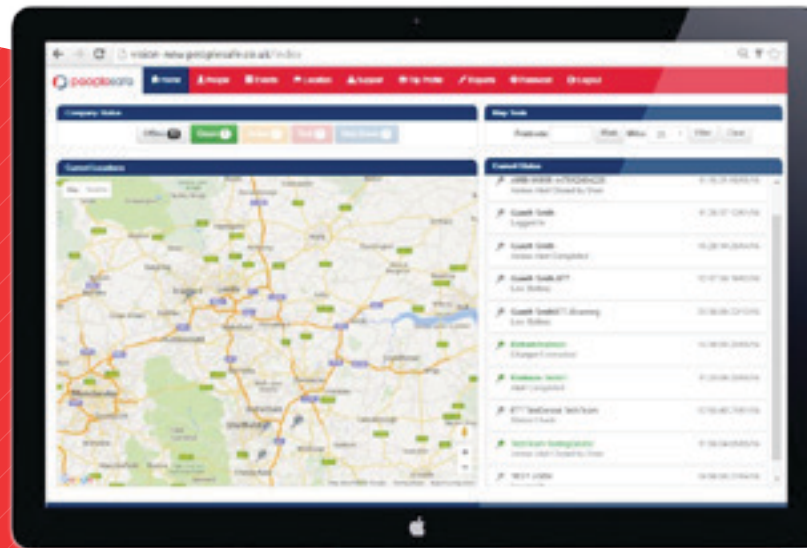
	01. MicroGuard	02. Identicom 877	03. Spot Gen3	04. Peoplesafe App	05. Twig Ex (ATEX)	06. Standard Mobile
Verbal abuse/threats	✓✓✓	✓✓✓	✗	✓	✓✓	✓
Physical abuse/threats	✓✓✓	✓✓✓	✗	✓	✓✓	✓
Man Down	✓✓	✓✓	✗	✓ *Android Only	✓✓✓	✗
Safe and well check	✓✓✓	✓✓✓	✓	✓✓✓	✓✓✓	✓
Performance with no mobile network available	✗	✗	✓✓✓	✗	✗	✗

KEY: ✗ Not suitable    ✓ OK in lower risk environments    ✓✓ Good performance    ✓✓✓ Excellent performance



## VISION

All products are compatible with our online management tool, Vision, providing access to real-time information about the safety status of your lone workers.



**Peoplesafe help organisations to protect their lone workers.**

We combine bespoke training and consultancy with the comprehensive implementation of device based solutions, to optimise the lone worker safety culture within your business.

**Rocksure Systems Limited**

Registered in England and Wales

Company Registration Number: 5292192

Registered Office: 457 Kingston Road, Epsom, Surrey KT19 0DB

Call: **0800 990 3563**

Email: **sales@peoplesafe.co.uk**

Visit: **www.peoplesafe.co.uk**



**Rocksure Systems Ltd is a subsidiary of the Send For Help Group** – the largest lone worker protection provider in the UK, Europe and globally. The Group has protected over 250,000 lone working end users, across a diverse range of vertical markets.